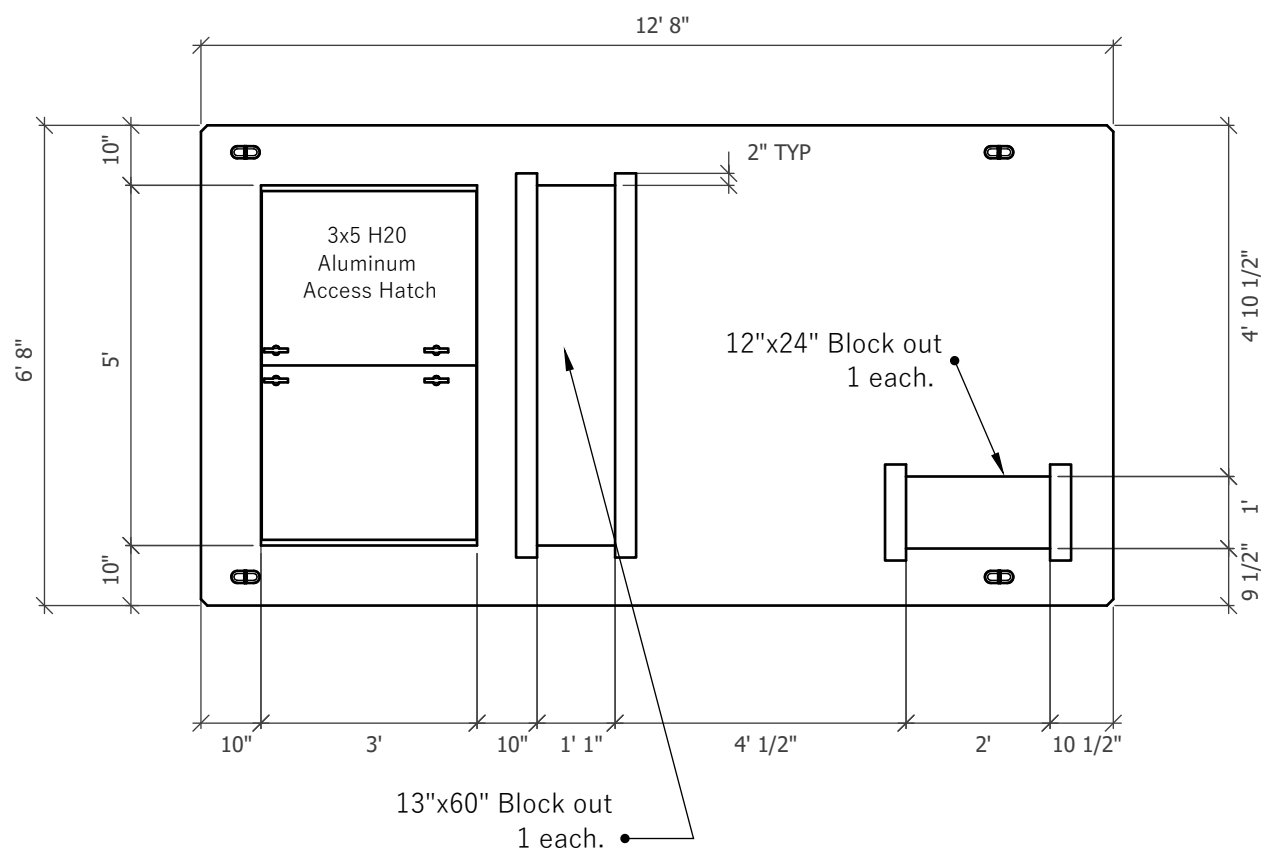
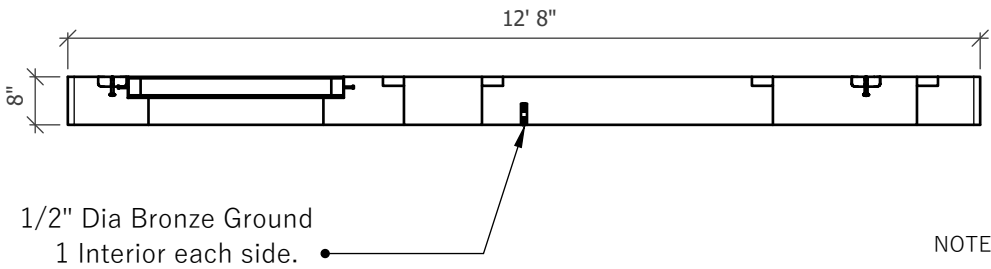


PLAN VIEW

CEC UM1-612L-9



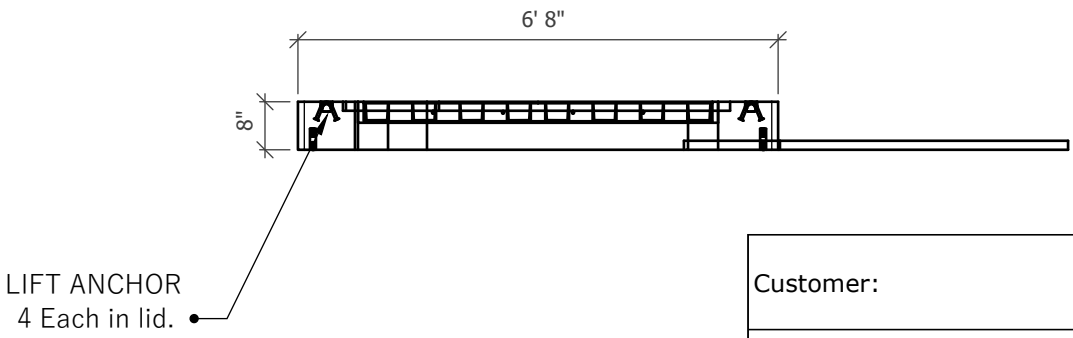
SIDE VIEW



NOTES:

LID: 6,700 LBS

END VIEW



Customer:

Project:

Product: CEC UM1-612L-9

Date Modified: October 7, 2025



CEC UM1-612L-9

541-923-3272
1111 NE 11TH ST.
REDMOND, OR
97756